

***Project context and objectives***

With more than 26.000 companies and almost 400.000 employees footwear industry is still relevant in Europe. However the trend shows a clear decline on business figures; low cost countries are becoming an obvious threat for the future of the sector.

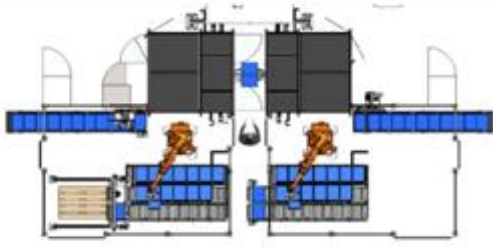


Figure 15: Semi-automatic assembly operation



Figure 16: Manual cutting of leather parts

System integrator



Technology provider



Footwear Sector



Sectorial Research (and Technology provider)

End Users





Manual shoe station



Fig.

8

Manual polishing

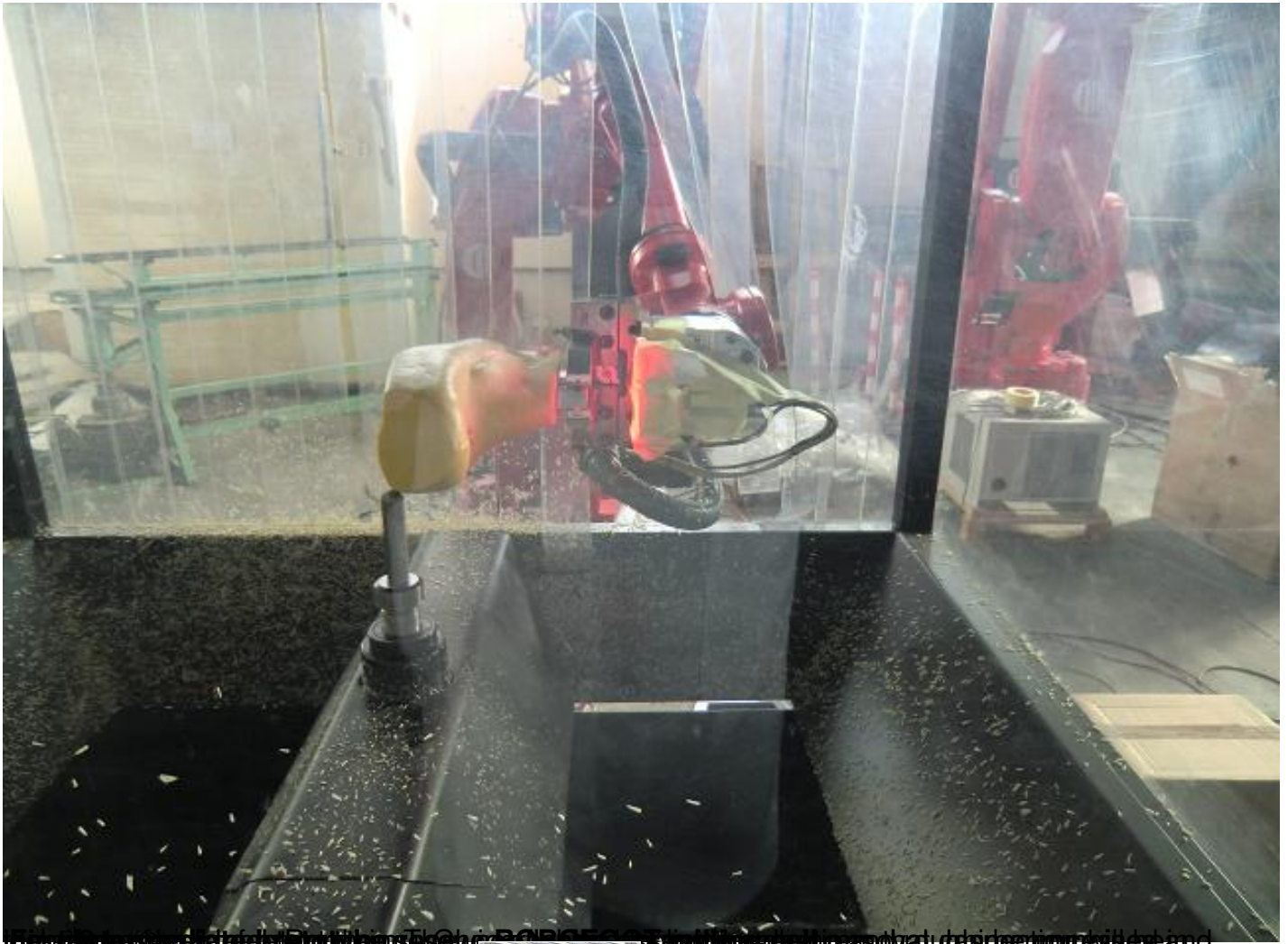


Fig. 10. Final product of the ROBOT. The robot is shown in a factory setting, and the final product is a yellow object.

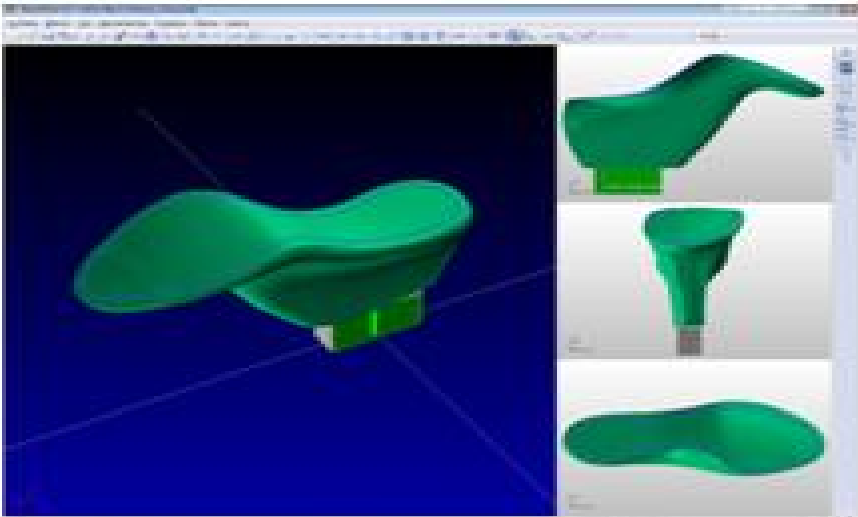
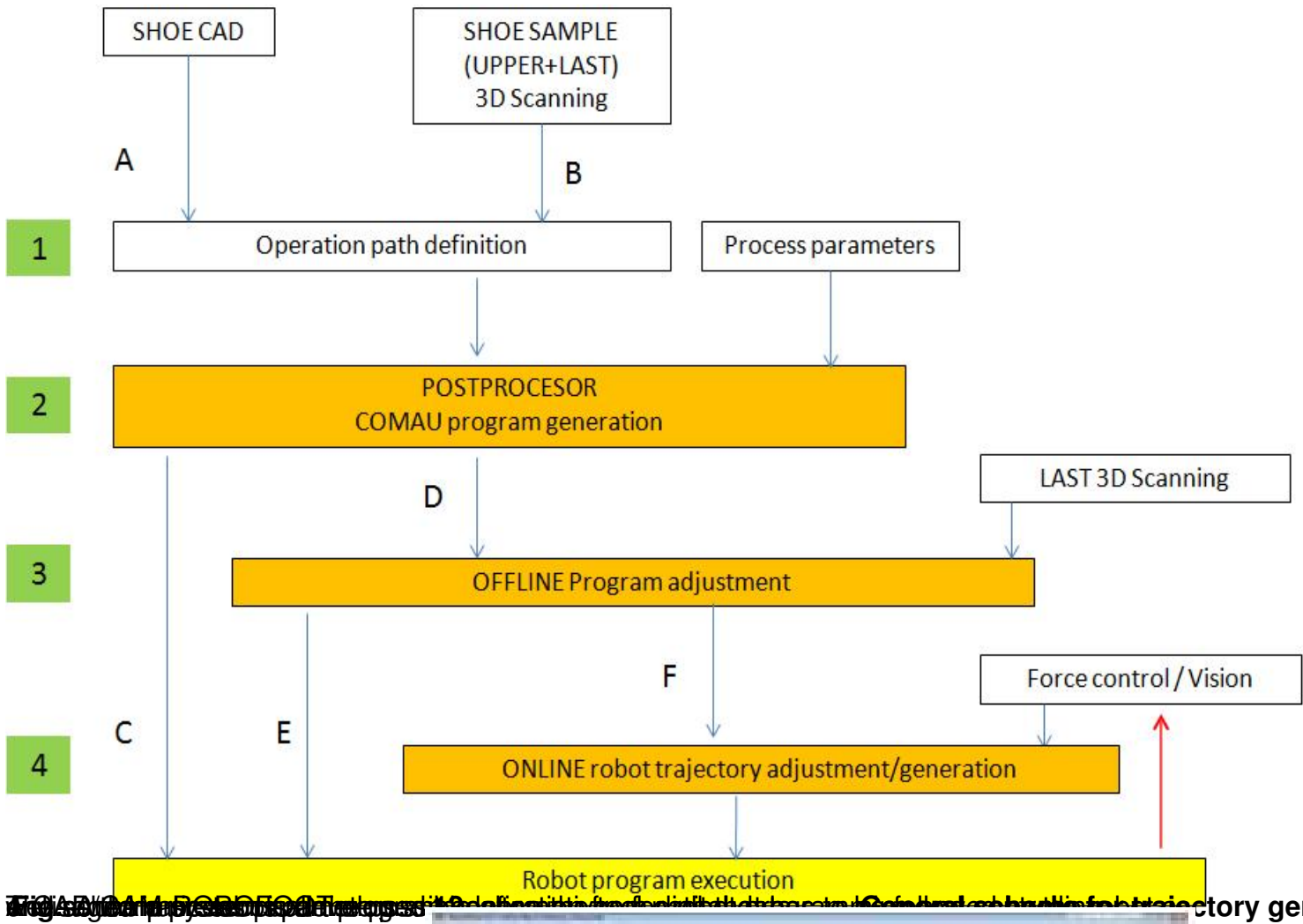
Fig. 11. Final product of the ROBOT. The robot is shown in a factory setting, and the final product is a yellow object.

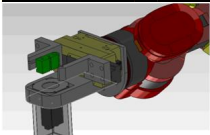


Fig.

10

Fig. 11. Final product of the ROBOT. The robot is shown in a factory setting, and the final product is a yellow object.





[Registries for relational data ware production](#) [Robot programming assistant](#) [C++ Multithreading](#) [C++ and Scripts](#) [picking](#)